

# SCSI Converter FR1SX

## ULTRA SCSI CONVERTER FR1SX (FireREX1)

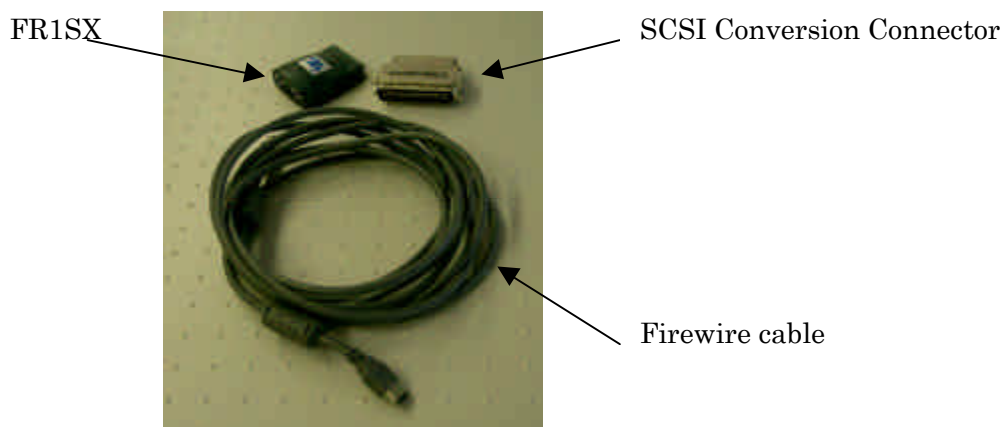
ULTRA SCSI CONVERTER FR1SX (FireREX1) by RATOC Systems International, Inc is released at this time. By this release, FT-S5500 can work under the environment with Firewire. In detail, we would like you to refer in the following URL.

<http://www.ratocsystems.com/english/products/subpages/firerex1.html>

And we show you about the connection and setting in the following.

### Parts and connection

#### 1. Parts



#### 2. Connection

- 1) Connect the FR1SX, SCSI Conversion connector and Firewire cable as the following figure. (There are 2 ports for connection, but use one port of either of 2 ports.)



- 2) Connect the FR1SX side to SCSI port with FT-S5500. Connect the Firewire cable to Firewire port with Macintosh.



## Setting

### [Preparation]

Download the “Utility and Firmware” for FR1SX (FireREX1) and Macintosh OS X from the following URL.

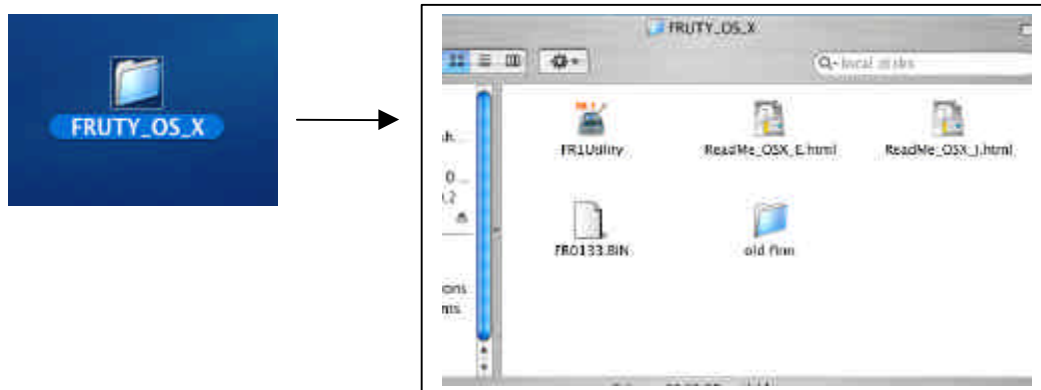
<http://www.rexpccard.co.jp/english/support/driver/firerex1.mac10.html>

Choose “fr1utility\_osx.sit” and download it.

### [Setting]

#### 1. Confirmation of version number of the FR1SX Firmware and downloading

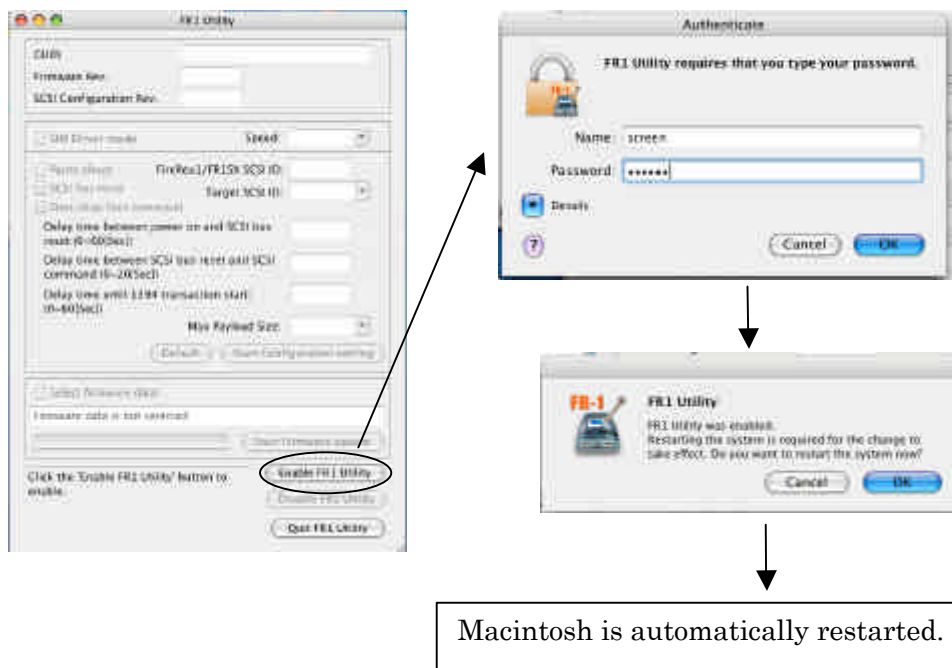
- 1) Turn on the power supply of FT-S5500.
- 2) After the initialization of FT-S5500 finishes completely, turn on the power supply of Macintosh.
- 3) Open the folder as the following.



- 4) Click the following icon and launch the program. And then, the following window opens.



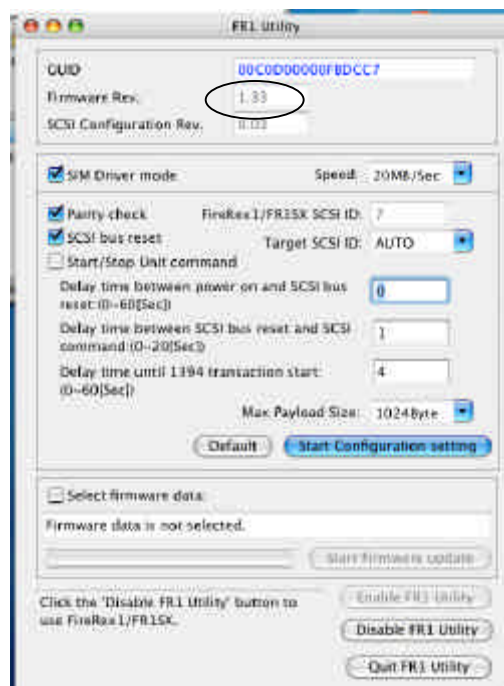
- 5) Click “Enable FR1 Utility” button. After that, fill the password for the MAC user and click “OK” button for the confirmation. (The Macintosh is automatically restarted.)



- 6) Launch the program in the order of the 3) and 4) before.

- 7) Confirm the version number of the Firmware.

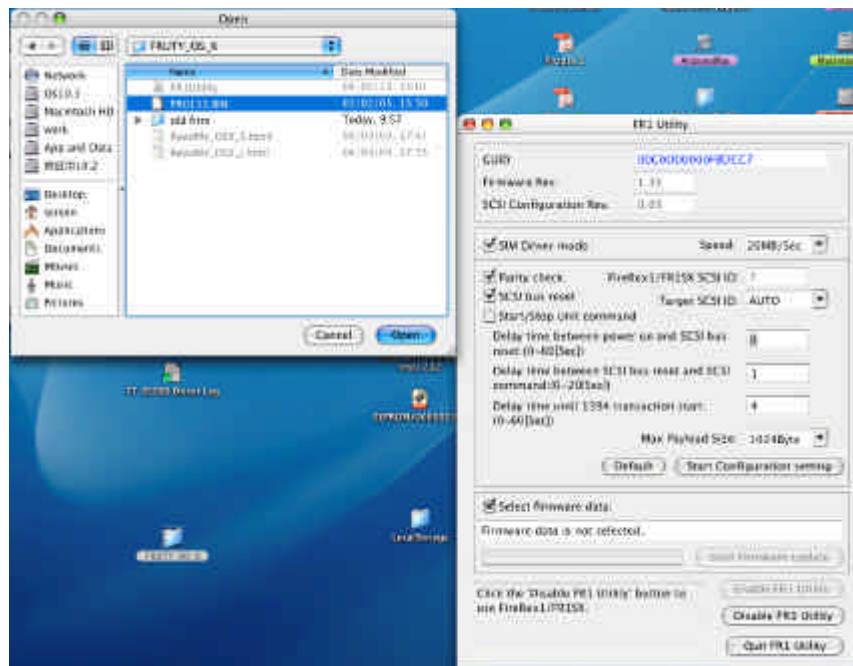
(At present, Jan 2005, the version is Ver1.33.)



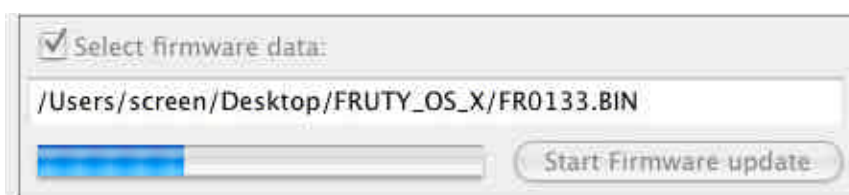
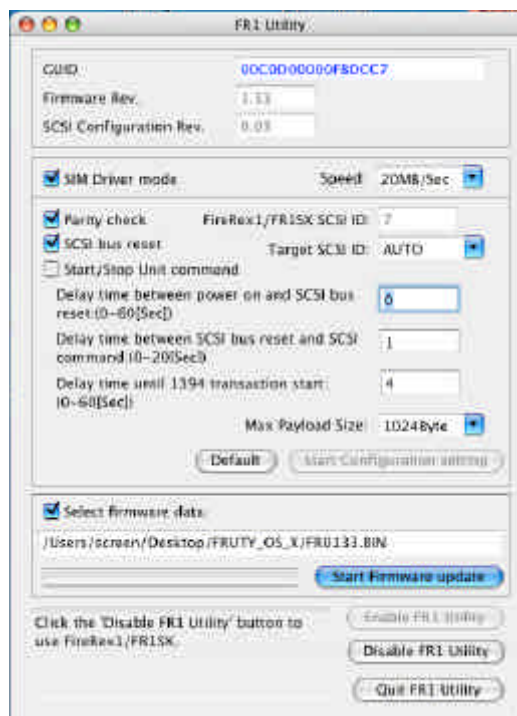
[ Notice]

If the version number of the firmware is the latest number, forward to the next step “2. Detail setting”.

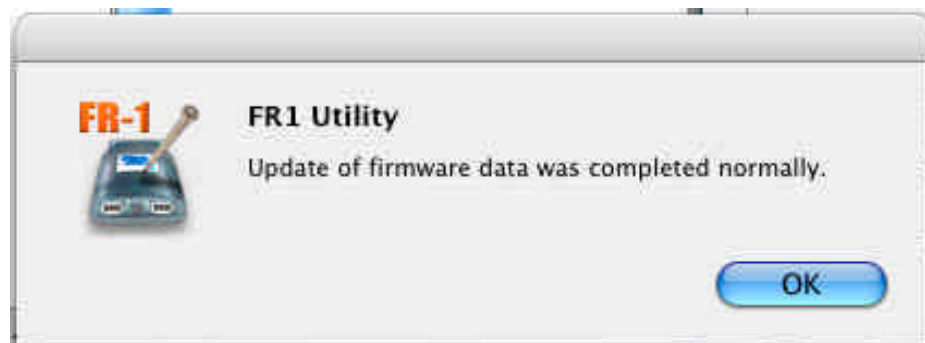
- 8) Fill the click mark on the Box of “Select Firmware data”. As Firmware select window appears on the monitor, choose the firmware in the folder you downloaded from the web site before and click “open” button.



- 9) Click “Start Firmware Update” button. Update of the firmware starts.



- 10) Click the “OK” button as the message that is “Update of firmware data was completed normally” appears on the monitor.

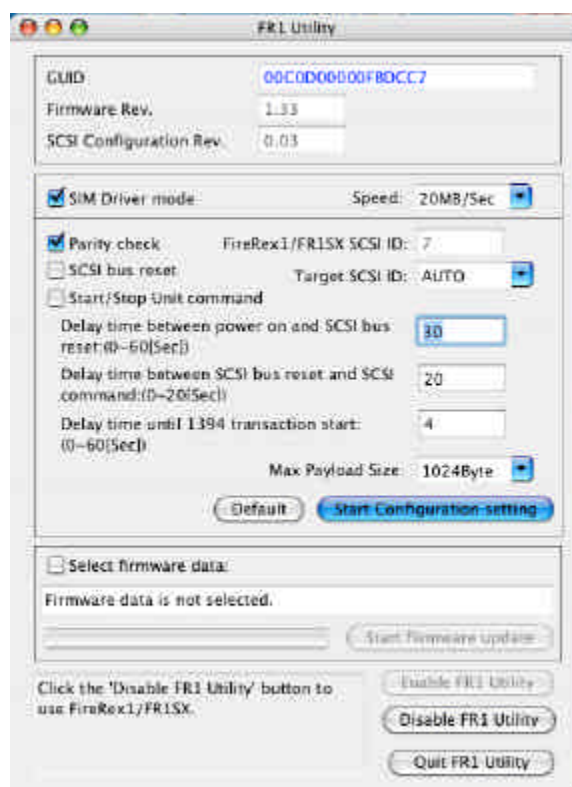


## 2. Detail setting

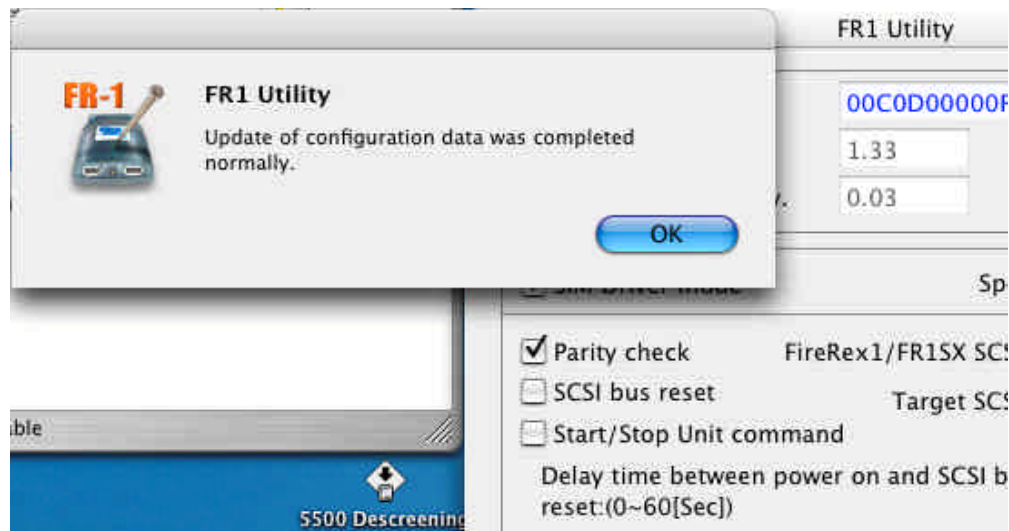
- 1) Set each data as follow.

- SIM Driver mode : Click  
Speed: 20MB/Sec
- Parity check : Click  
FireRex1/FR1SX SCSI ID:7
- SCSI bus reset : not to click  
Target SCSI ID: AUTO
- Start/Stop unit command : not to click  
Delay time between power on and SCSI bus... : 30  
Delay time between SCSI bus reset and SCSI.. : 20  
Delay time until 1394 transaction start : 4  
Max Payload Size : 1024Byte

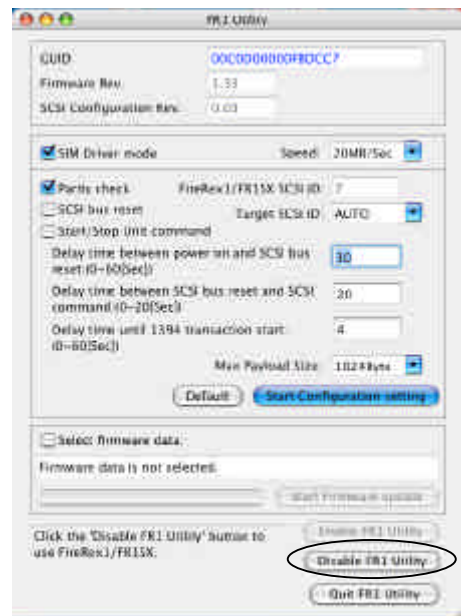
- 2) Click “Start configuration setting” button after you filled each data.



- 3) Click “OK” button as the message that is “Update of configuration data was completed normally” appears on the monitor.



- 4) Click “Disable FR1 Utility” button.



- 5) Fill the password for the MAC user.



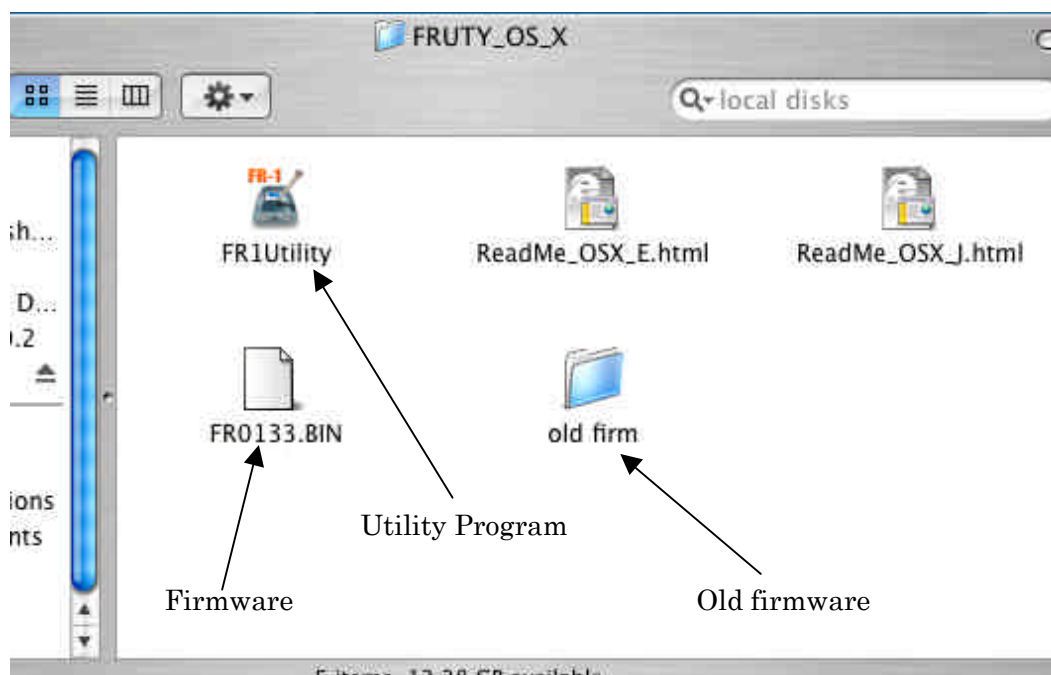
- 6) Click “OK” button as the message that is “FR1 Utility was disabled.....” appears on the monitor. The Macintosh is automatically restarted.



- 7) After restarting, you can use the SCSI converter, FR1SX with FT-S5500.



## Reference



## Recommend Parts

- (1) SCSI converter  
 Manufacturer : RATO Systems International, Inc  
 Parts name : FR1SX (FireREX1)
- (2) SCSI Conversion connector (Half pitch pin 50 pin ↔ Full pitch 50 pin)  
 Manufacturer : RATO Systems International, Inc  
 Parts name : RSO-H50C50
- (3) FireWire cable (6pin ↔ 6pin 4.5m)  
 Manufacturer : SANWA SUPPLY INC.  
 Parts name : KE-944

## Environment

Macintosh Power Supply MAC G4/G5 (Recommendation : G5)  
 OS : Mac OS X 10.3 or higher  
 Others : FT-S5500 / ColorGeniusEX v2.1x or higher